

AgBite

A series of commodity insights

Did you know?
Only 1% of corn planted in the United States is sweet corn

Overview

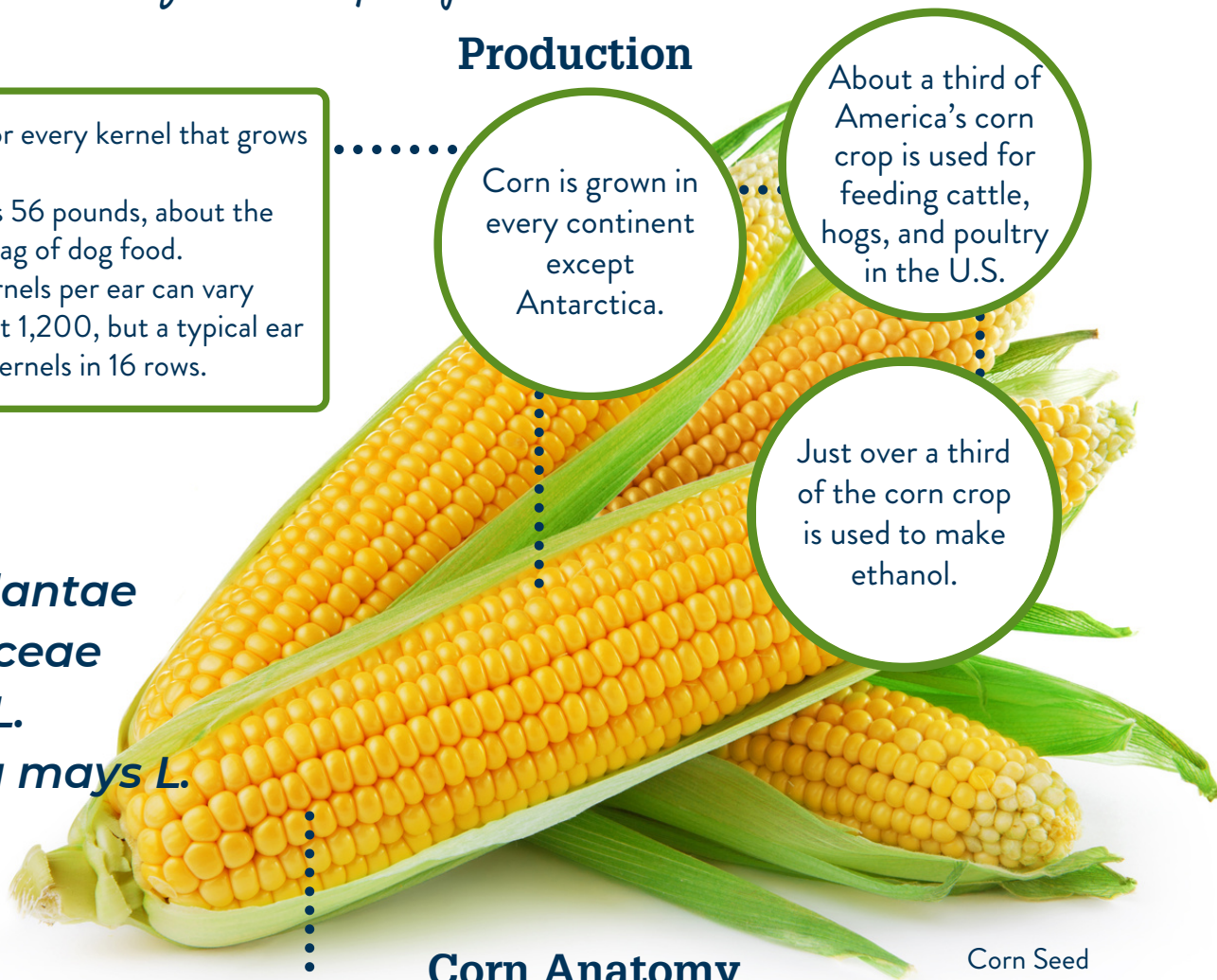
- There is one silk for every kernel that grows in an ear of corn.
- A bushel of corn is 56 pounds, about the weight of a large bag of dog food.
- The number of kernels per ear can vary from 500 to about 1,200, but a typical ear would have 800 kernels in 16 rows.

Production

Corn is grown in every continent except Antarctica.

About a third of America's corn crop is used for feeding cattle, hogs, and poultry in the U.S.

Just over a third of the corn crop is used to make ethanol.



Corn

Kingdom: *Plantae*

Family: *Poaceae*

Genus: *Zea L.*

Species: *Zea mays L.*

Nutritional Information 1 cup 166 g

Total Fat 2 g	Vitamin C 9.86 mg
Cholesterol 0 mg	Calcium 2.9 mg
Sodium 21 mg	Iron .75 mg
Potassium 392 mg	Magnesium 53.6 mg
Total Carbohydrate 27 g	Zinc .667 mg
Dietary Fiber 2.9 g	
Sugar 9 g	
Protein 4.3 g	

Sources: fdc.nal.usda.gov, iowacorn.org, usda.gov, foodgardening.mequoda.com

Corn Anatomy

